

# **EQUIPMENT FOR RENT**

**from the Allen County SWCD & the  
St. Joseph River Watershed Initiative Partnership**



**John Deere 9520 with Trimble RTK auto steer, Brillion Zone Commander**

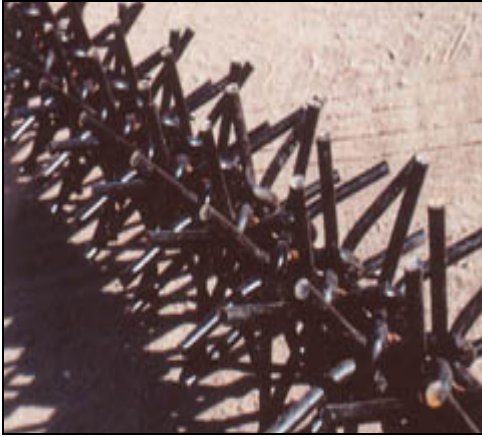
- Runs at a 13-inch depth to loosen the hard pan layer
- Leaves a strip to be planted on in the spring without further tillage

**\$20 per acre or \$19 cash, includes operator. Producer is responsible for fuel.**



**Remlinger PST 8 row rigid Strip-Till unit, powered by a Case IH MX-285 with  
Trimble RTK auto steer.**

**\$20 per acre or \$19 cash, includes operator. Producer is responsible for fuel.**



### **Phillips Rotary Harrow – 43'**

- Fluffs top soil
- Helps to warm and dry seed bed, allowing earlier planting
- Helps to evenly distribute residue
- Manages early emerging weeds

**\$6.00 per acre for the first 200 acres, \$4.50 per acre for all acres over 200.**



### **DMI Strip Till Unit – 12 Row**

- Places N, P, & K into the root zone at a depth up to 8 inches
- Equipped to apply anhydrous ammonia

Prices subject to change without notice.